

Country Cabin and Private Getaway In Coloma WI, Waushara County



United Country Hamele Auction & Realty • 608.742.5000 • tdixon@hameleauctions.com



PROPERTY ADDRESS:
W13461 Cypress Ave.
Coloma, WI 54930

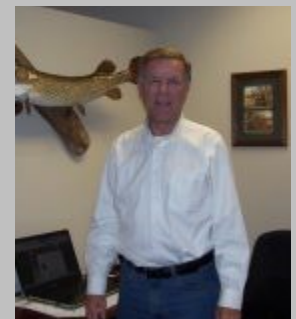
PRICE: \$89,000
ACRES: 6.64
COUNTY: Waushara

PROPERTY DESCRIPTION:

Waushara County Wisconsin, enjoy the great outdoors, bring your toys, and bring your family. This central Wisconsin home has fun all around it. Close to Pleasant Lake, one of many lakes Waushara County offers. Pleasant lake is outstanding for water skiing fishing, boating, canoeing, or kayaking. Pleasant lake is a nice clean, clear lake for swimming with a public beach. Located just outside Coloma, Wisconsin only about 3 miles from 1-39. This private cabin has a gated private entrance to your very own Wisconsin getaway. For the hunters, Waushara County offers many public lands to chase trophy white tail deer, turkey, and more. Loaded with trout streams for those avid fisherman, and if you love to hike, there are many Wisconsin state parks in the area. This cute cabin is also near Castle Rock Lake and Lake Pettenwell. Just off 1-39 for easy access from Chicago, Milwaukee, and Madison Wisconsin. Waushara County has it all, great golfing Wisconsin, ATV trails, snowmobiling trails, hunting, fishing, camping and more. Shopping in Wautoma, Wild Rose, Coloma, Green Lake, and Princeton Wisconsin for Antiques and collectables. Places like Stevens Point, Portage, and Wisconsin Dells are not far so you can spend the day having fun! This area offers great winter fun like skiing Cascade Mountain Resort in Portage Wisconsin or Rib Mountain ski area in Wausau Wisconsin. Travel Wisconsin and have fun in Waushara County Wisconsin.

PROPERTY HIGHLIGHTS:

- Waushara County
- Potential vacation home
- Near public hunting land
- Close to Pleasant Lake
- Near many attractions
- 6.6 acres



PRESENTED BY:

Terry Dixon

M: 608.697.0750

P: 608.742.5000

tdixon@hameleauctions.com

www.uchomefinder.com

United Country Hamele Auction & Realty

1325 W. Wisconsin St

PO Box 257

Portage, WI 53901

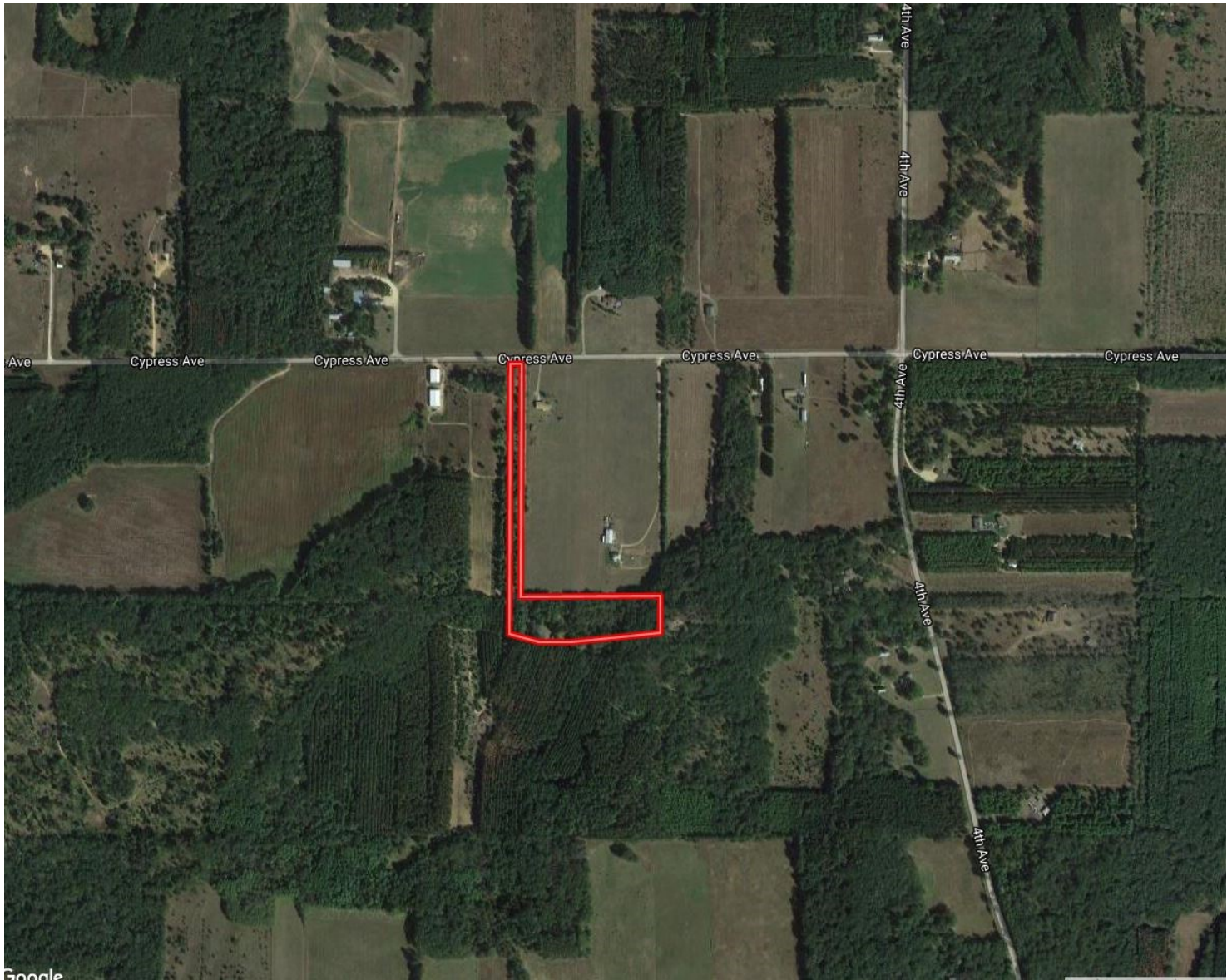
www.hameleauctions.com

tdixon@hameleauctions.com

Country Cabin and Private Getaway In Coloma WI, Waushara County



United Country Hamel Auction & Realty • 608.742.5000 • tdixon@hamelauctions.com



TAXES: \$1,022

TAX YEAR: 2016

BEDROOMS: 1

BATHROOMS: 1

SQ FEET: 770